



# Recovery Systems Company, Inc

December 2012

The Equipment People

## Quote Corner:

Christmas begins about the first of December with an office party and ends when you finally realize what you spent, around April fifteenth of the next year.

952-935-4330

888-935-4330

952-935-6875 Fax

[www.recoverysy.com](http://www.recoverysy.com)

Questions? Please Email

Or call;

David Webster, Sales

[davidw@recoverysy.com](mailto:davidw@recoverysy.com)

### Mark Winge, Service

[mark@recoverysy.com](mailto:mark@recoverysy.com)

Service Technicians

*We have service technicians available 24 hours a day should an emergency happen.*

Sales and Service

*We provide Sales on both New and Used Equipment as well service for large and small compactors and balers.*

Parts, Wire, Twine, Covering

*We also sale parts, different size baling wire, as well baling twine. And covering for landfills and contraction sites*

## A New Year A Fresh Start

The holidays can be a really crazy time of year, with all of the holiday parties and gift giving; and let's not forget how many people all of us spend time with.

We spend many hours laughing and eating with family, friends and co-workers. So it's really no wonder that before we know it, the year has come to an end.

With the start of a new year brings a fresh slate. We all know and have even felt it, as well as seen it for ourselves; the years falling by and with it the opportunities to make some changes within our lives and companies.

Resolutions come and go every year, we have all been there; we have all made them. And every year it seems less and less people actually stick to their resolution.

Even if your resolution is to finally clean out the garage, or help out down at the local food shelf. There is one resolution that you should make and stick to; and that is to make sure your equipment is up and running at its very best.

It's easy to over look scheduling that PM (Preventive Maintenance) for your balers or compactors; with all the cold weather we get this time of year, it can be unforgiving; and it can cause a great deal of damage to your equipment.

Or maybe it's just time to replace that machine; it could be time to upgrade to a newer or larger baler/compactor.

We have a full service staff of technicians that are all highly trained and willing to come out to your location, or maybe you just need to talk to one of our technicians for a bit; that's fine too.

Which ever way you go, repair or buy; just remember that we are here to help you. To help you get that fresh start to the New Year.

## Meet Our Staff



We would like to take this time to introduce every one to the newest member of our staff, Daniel Klingelhut.

Daniel came to work with RSC back in April of this year; Daniel it a vital member of our service technician team, and we are all very happy to have him on broad.

Daniel grew up on the family farm, and while working with his father on the tractors and other farm equipment, his father was able to teach him many things about hydraulic components, which lead to his interest in the field of hydraulics. He then decided to study fluid power and robotics at Hennepin Tech for

## Contact Us

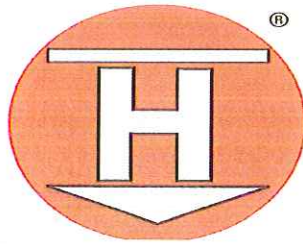
[www.recoverysy.com](http://www.recoverysy.com)



four years before coming to work for Recovery Systems Company, Inc.

When Daniel is not at working, and is on his down time he enjoys many out door activities, such as hunting, four wheeling and working on his truck. He also enjoys and looks forward to spending time with friends and family.

## Equipment Sales



We would like to take this time to high light for everyone some of the equipment that we have on hand for sale.

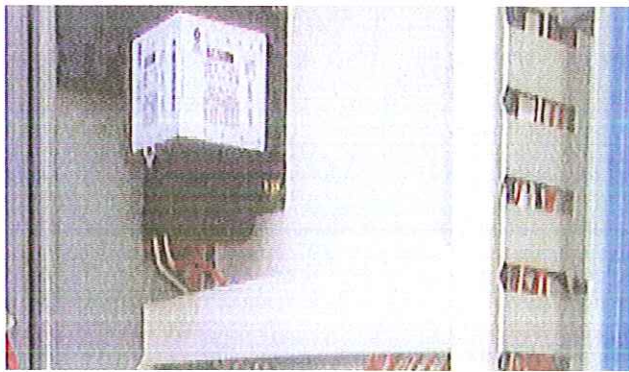
Take some time to look over the items below, and if you are interested please contact us; and if you don't see what you are looking for we may still be able to help you; after all this is just a few of the items we have available.

### HL-12XHD



This Automatic Horizontal Baler is all ready to ship out; here are just a few of the specifications: 30 HP, 460 Volt, 3 Phase Motor, TEFC, high efficiency. 8 inch bore, 72" stroke, 5.5 inch rod. 3000 PSI. Cycle time 28.5 seconds.

Should you be interested in this machine and would like to have more information or pricing, please contact David Webster by phone or email. (888) 935-4330 or [davidw@recoverysy.com](mailto:davidw@recoverysy.com)



## New Harris/Selco HLO-518AR50 Open-End Auto

It is brand new and has never run any material at all

8" Cylinder

50 HP

50" x 39 1/2" Infeed Opening

Regenerative Hydraulics

Fully Equipped with Oil

Hopper Extension

Platform

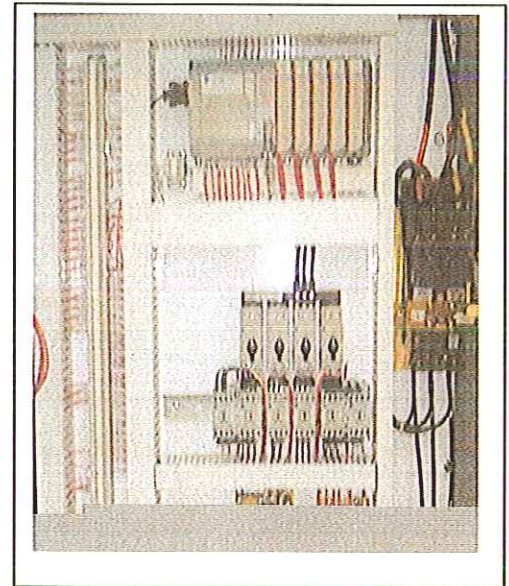
10' Bale Run Out Table

Y-Delta Starting

If interested, please be sure to contact David

Webster at (888) 935-4330 or

[davidw@recoverysy.com](mailto:davidw@recoverysy.com)



Additional equipment is available, for more information on any equipment be sure to contact us. We have more equipment than what we could put in this small news letter, so remember just because you don't see what you are looking for here, check with us; we more then likely have what you are looking for or we can get it for you. All pricing and availability are upon request from David Webster, (888) 935-4330 or [davidw@recoverysy.com](mailto:davidw@recoverysy.com)